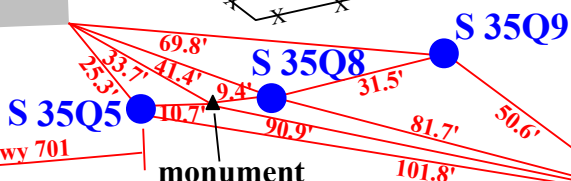


Latitude: 35.113686
 Longitude: -78.316614

Former
 Halls
 School

athletic field
 backstop fence



0.1 miles to US Hwy 701

monument

R10 Monument
 Coordinates (03-17-2015)
 Latitude: 35.113694
 Longitude: -78.316576

Site Map
 North Carolina
 Monitoring Well Network
 Halls Site, S 35Q
 North of Clinton,
 Sampson County, NC

N

NOTE: This map is for informational purposes only. It does not authorize any party to enter onto any lands depicted herein.

Enoch Rd (SR 1743)

former
 Halls School

Halls
 Fire Dept

**Halls
 Monitoring
 Station
 (3 wells)**

500 ft